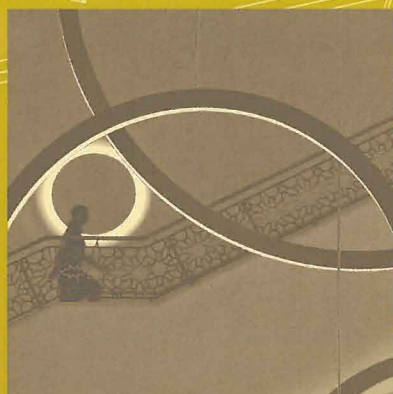
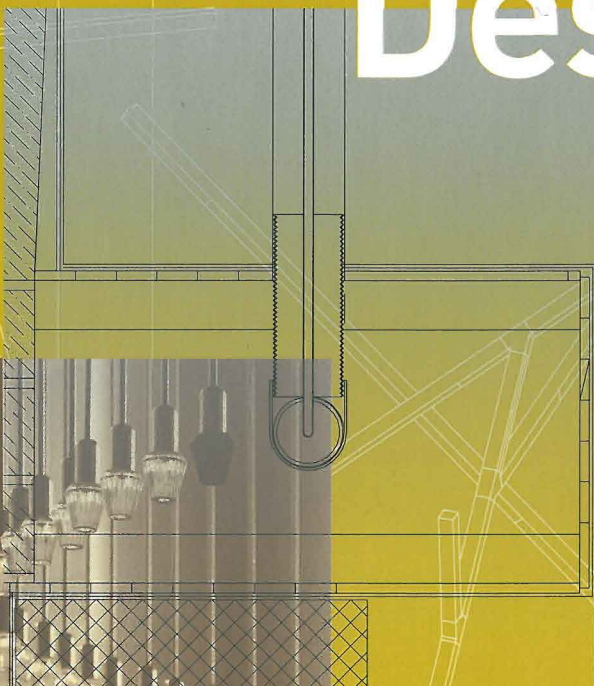
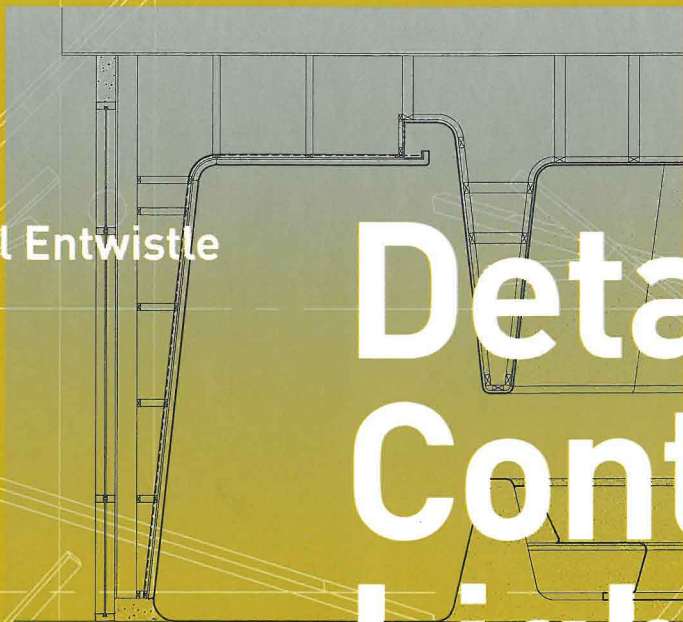


Jill Entwistle

Detail in Contemporary Lighting Design



Free
CD-ROM
with all
drawings

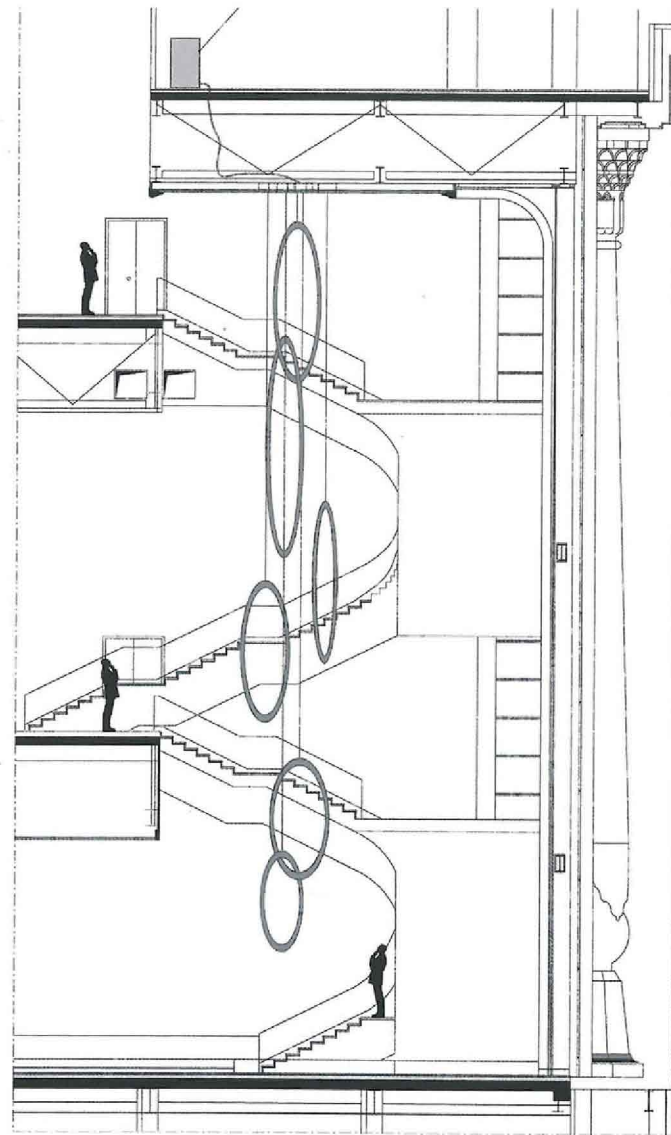
PALACE OF INTERNATIONAL FORUMS, TASHKENT PFARRÉ LIGHTING DESIGN

Clad entirely in marble on a base of black polished granite, the Palace of International Forums makes a grand statement in the heart of the Uzbekistan capital. Designed for events and international conferences, it has two extensive foyers, one for government and one for public use, a 1,850-seat auditorium, conference rooms and a banquet hall.

The lighting remit covered both exterior and interior (28,000sq m/300,000sq ft), and necessarily reflected the grandiose ambitions of the setting. Where possible lighting was integrated but the scheme also involved specially designing and manufacturing a large number of chandeliers and luminaires. In all 1.8 million crystals and more than a quarter of a million LEDs, alongside metal halide, halogen and fluorescent lamps, were specified for a total 9,400 light points.

One of the most ambitious installations is the series of 12 LED rings, six located in each of the two grand VIP staircases. Suspended from a height of 24m (78¾ft) and falling to 3.4m (11ft) above the floor, the largest is 5.5m (18ft) in diameter and the smallest 2.5m (8ft), with the weight ranging from 220kg to 450kg (485lb to 990lb). The custom-made aluminium H-profiles are secured with narrow (just 20mm/¾in) polished stainless steel tubes. Clad on both sides with three million rhinestones, the inner and outer circles glow with light from warm white (3000K) LEDs behind a patterned acrylic diffuser. There are 40,000 LEDs in total using 20kW.

Echoing the motif are customized circular wall lights. These are housed in a recessed opening with a custom-made gypsum surround, which melds them into the stucco lustro wall surface. The central 120cm (47¼in)-diameter disc is aluminium with a matt white finish, which creates a corona effect. The fitting uses eight 24W TC-L fluorescent lamps.



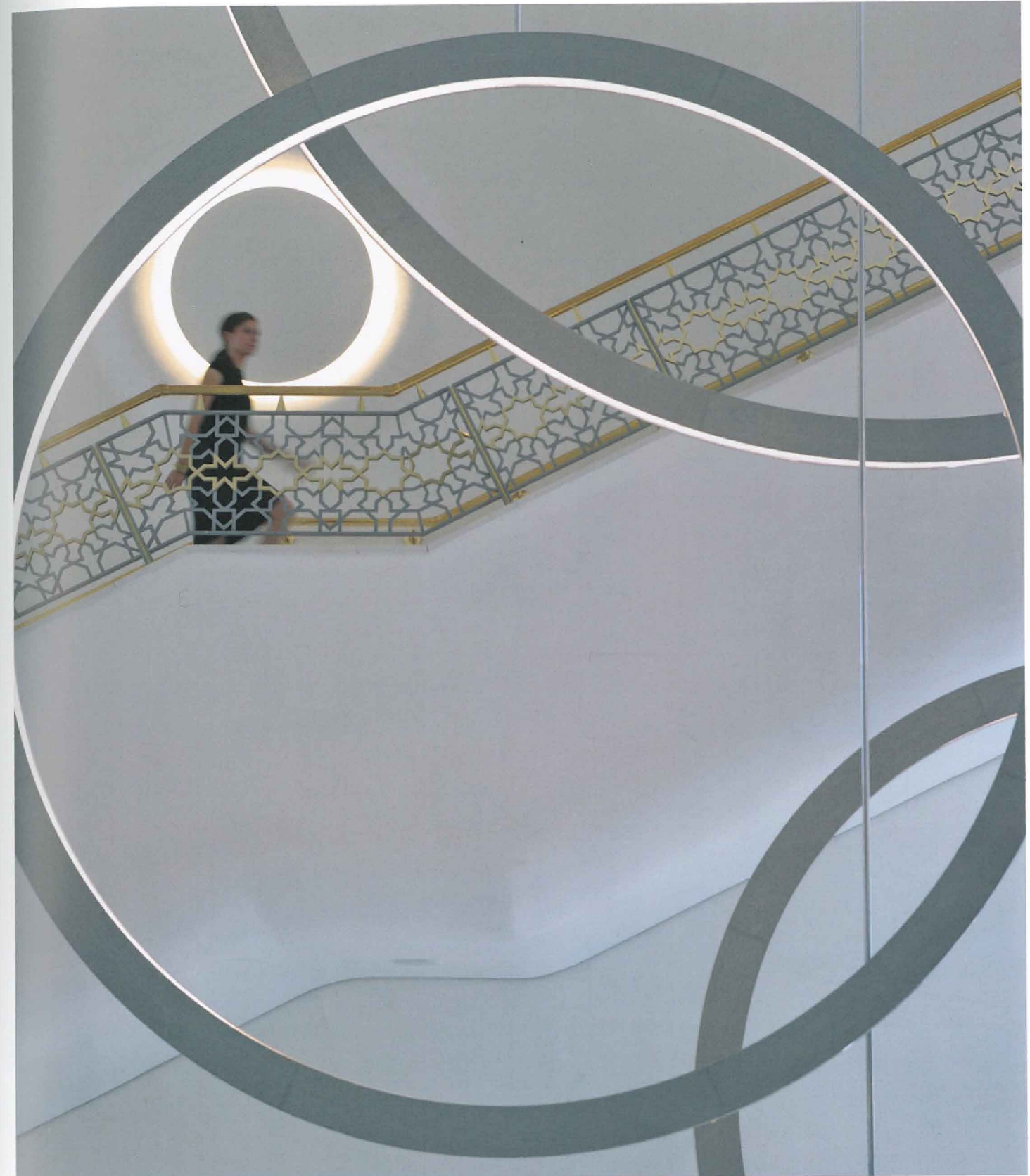
SCALE 1:150

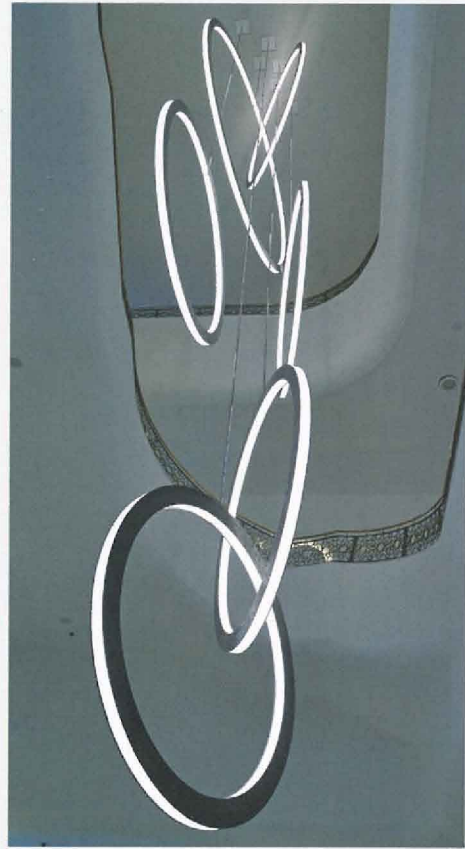
ABOVE RIGHT

Section of one stairway with LED ring lights suspended through three storeys

OPPOSITE

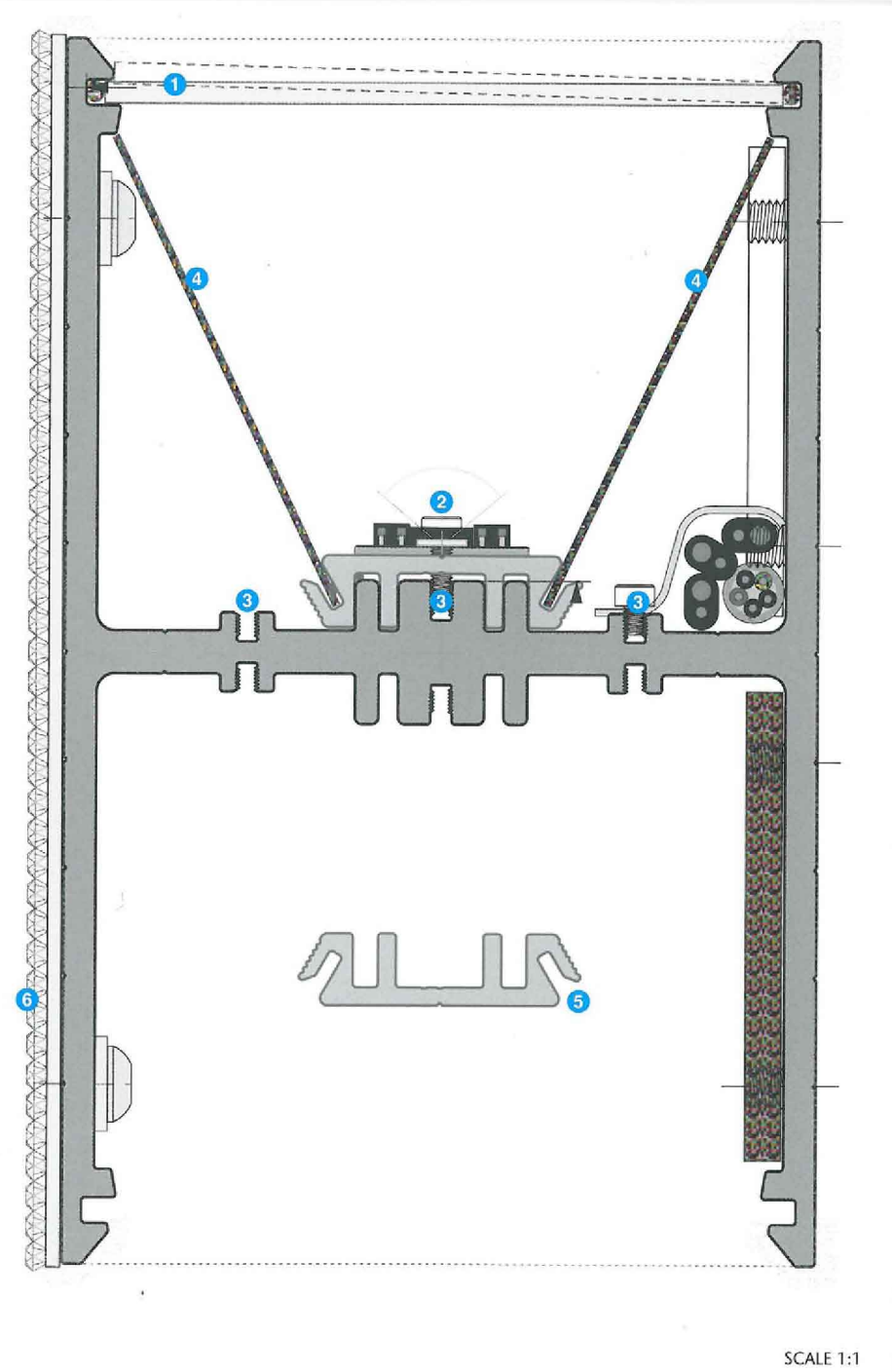
The rings are clad on both sides with three million rhinestones, while the inner and outer circles glow with light from warm white LEDs behind a patterned acrylic diffuser



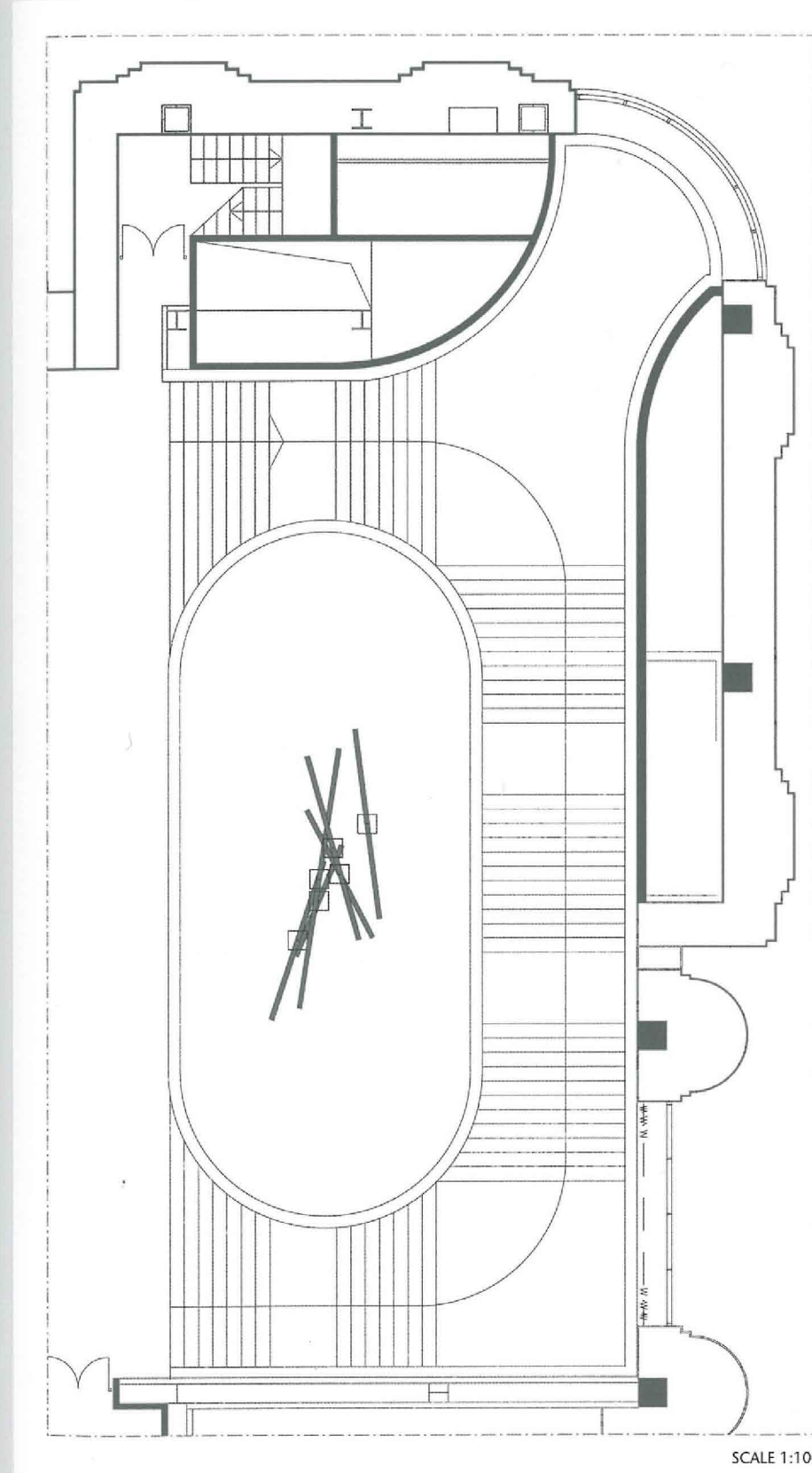


ABOVE
Suspended from a height of 24m (78¾ft), the largest ring is 5.5m (18ft) in diameter and the smallest 2.5m (8ft)

RIGHT
Cross section of H-profile ring light
1 Structured polycarbonate cover
2 Warm white (3000K) LEDs
3 Screw channel
4 Aluminium reflector
5 LED girder section profile with aluminium cooling ribs
6 Strass crystals (both sides)



SCALE 1:1



SCALE 1:100

LEFT
Plan view of one stairway showing configuration of rings